



MADE IN GERMANY DESIGNED FOR YOU

FGB GAS CONDENSING BOILER



PERFECTLY IN TUNE WITH YOU.



THE WOLF FGB DESIGNED FOR YOU

The FGB-series comes in three capacities [24/28/35 kW] and is available in a heating and a combi version. The FGB offers everything an advanced wall mounted condensing boiler needs, operating with natural gas and with LPG. Made in Germany.

THE DESIGN:

A stylish casing and the compact dimension offer many mounting possibilities. The internal components are chosen from very robust and durable materials such as copper pipes, cast-aluminum heat exchanger, a glass fiber reinforced polyamide hydraulic block and a stainless steel DHW heat exchanger in the combi boilers. The straightforward design of the monobloc heat exchanger has large and simple water channels. The High-efficiency pump and fan together with the high thermal conductivity of the heat exchanger lets the FGB easily comply to class A of the ErP directive. Additional components like safety valve, condensate trap, expansion vessel, air vent and a flue gas non-return valve [for multiple-floor systems] are already integrated. Installation and maintenance can be done very quickly by a single person due to the fixing and connection design.

THE FEATURES:

The design of the combustion chamber is optimized for a very clean combustion and an efficient modulation range [up to 1:6] at very low gas pressures. The built-in controller supports weather compensation [sensor as accessory], is compatible with WOLF control module BM-2, allows solar integration and provides internet connectivity via browser or app [WOLF Link pro as accessory]. Online control and monitoring for users and installers gives you access to the boiler from everywhere for better service, more savings and highest comfort. The big display shows all the important data with a very simple and user friendly interface.

A high DHW flow rate with a draw-off range from only 2 l/min to 16 l/min together with a quick start function and a high-speed temperature adaption, the hot water temperatures are always comfortable. The new spread control of the pump lowers the return temperatures for more condensation, higher efficiency and a cleaner heat exchanger.

BENEFITS FOR THE INSTALLER:

- > robust and durable materials
- > easy installation and maintenance
- > straightforward controller design
- > complies with ErP - class A
- > remote control [WOLF Link pro accessory]
- > high level of standard equipment
- > simple solar integration for DHW
- > compatible with WOLF Control System WRS-2
- > practical modulation range up to 1:6

Flue gas system "QuickFlue":

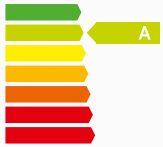
- > tailored to the requirements of the FGB
- > tested and accredited system
- > high-grade polyphenylene sulfide [PPS]
- > very quick and easy to install
(no pipe clamps needed)

BENEFITS FOR THE USER:

- > high value - high efficiency
- > low operation costs
- > smartphone operation [WOLF Link pro accessory]
- > stylish design
- > compatible with Amazon Alexa
- > constant hot water temperatures
- > compact dimensions
- > simple user interface
- > very silent

External LAN/WLAN interface module WOLF Link pro via eBUS





Combined ignition and monitoring electrode

Sight glass for checking the combustion chamber

Integrated air vent valve

Integrated expansion vessel 8 l

Flue NRV integrated: multiple floor operation possible

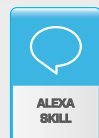
High quality heat exchanger made from robust aluminium-silicon alloy

Fan with high efficiency motor

Gas combination valve
Natural gas or LPG

Pressure sensor

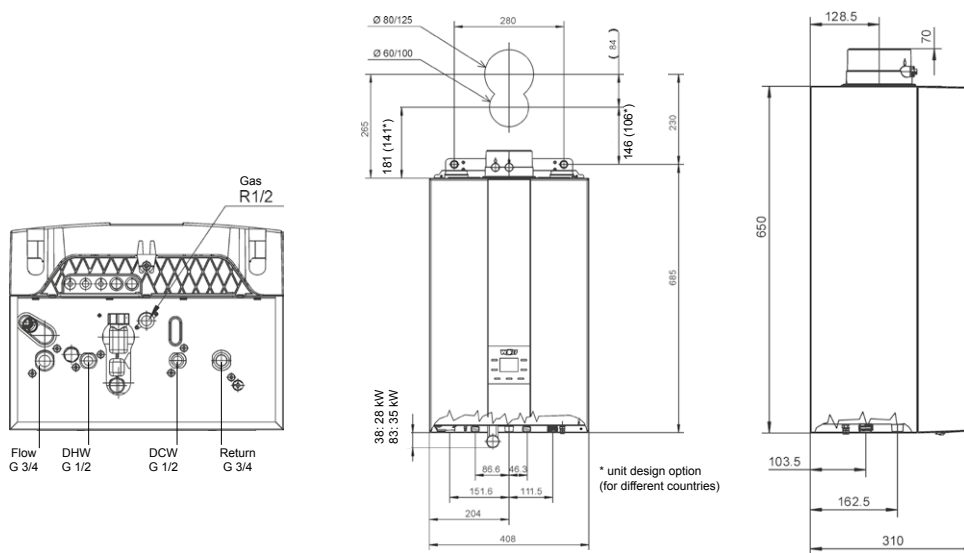
Inlet pipe with integrated silencer



3 bar integrated safety valve

Trap with cleaning aperture

High efficiency heating circuit pump



NEW

TYPE		FGB-24	FGB-K-24	FGB-28	FGB-K-28	FGB-35	FGB-K-35
Dimensions W x D x H (without flue gas collar)	mm	408 x 310 x 650					
Rated heating output 80/60 °C	kW	19.4/23.3*		24.4/27.3*		31.1/30.0*	
Rated heating output 50/30 °C	kW	20.7	20.7	27.3	27.3	34.9	34.9
Rated heat input*	kW	20/24*	20/24*	25/28*	25/28*	32/35*	32/35*
Lowest heating output (modulating) 80/60 °C	kW	4.8	4.8	4.8	4.8	6.7	6.7
Lowest heating output (modulating) 50/30 °C	kW	5.3	5.3	5.3	5.3	7.5	7.5
Lowest heat input [mod.]	kW	4.9	4.9	4.9	4.9	6.9	6.9
Useable efficiency at rated heat output and high temperature regime Hi/Hs	%	97/87	97/87	98/88	98/88	98/88	98/88
Useable efficiency at rated heat output and low temperature regime Hi/Hs	%	110/99	110/99	110/99	110/99	110/99	110/99
NOx Class		6	6	6	6	6	6
Total weight	kg	27	27	27	27	28	28
Expansion vessel	l	8	8	8	8	8	8
Max. total positive heating circuit pres- sure	bar	3	3	3	3	3	3
Specific water throughput D at ΔT = 30 K	l/min	-	10.6	-	13.4	-	16.3
Power supply/Fuse		230V/50Hz/3.15A					
Air connection	mm	100	100	100	100	100	100
Flue gas connection	mm	60	60	60	60	60	60

*) Heating mode / DHW mode

WOLF GmbH
 Industriestr. 1
 D-84048 Mainburg
 Tel. +49 [0] 8751/74-0
 Fax +49 [0] 8751/74-1600
www.wolf.eu
info@wolf.eu

PERFECTLY IN TUNE WITH YOU.

WOLF