

**WOLF**

For contractors and operators  
Gas Condensing Boiler TGB-2

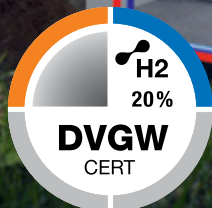


# Gas Condensing Boiler TGB-2

Top technology for renovations



Direct link  
to the product.







## Our allrounder: Topline Gas Condensing Boiler TGB-2-20/30/40

Suitable for use as a **solo heat generator or a hybrid solution** which is eligible for subsidies. The three output versions (20, 30 kW and 40 kW) of the new gas condensing boiler are fast and und complicated solutions **for new construction projects and heating system modernisation**. The combination of cutting edge technology with proven WOLF components plus the large heating water capacity of the heat exchanger makes for easy system integration. Its uniquely flexible flue gas connection options, not to mention its status as the most silent unit on the market (42 dB(A)), put the TGB-2 at the forefront of modern boiler technology.



Direct link  
to the product video.

Gas Condensing Boiler TGB-2-20/30/40

**Nine good reasons  
to choose the TGB-2-20/30/40.**

09

**WOLF**

# /01



## Easier & faster exchange of heating system

Whether installed as a solo heat generator or a hybrid solution eligible for subsidies, the output range of 20 to 40 kW makes these units perfect for use in older single- or multi-family homes. The large heat exchanger capacity with plenty of heating water makes integration into existing systems a breeze, even without a low loss header, and the connection points make it easy to swap out old systems.

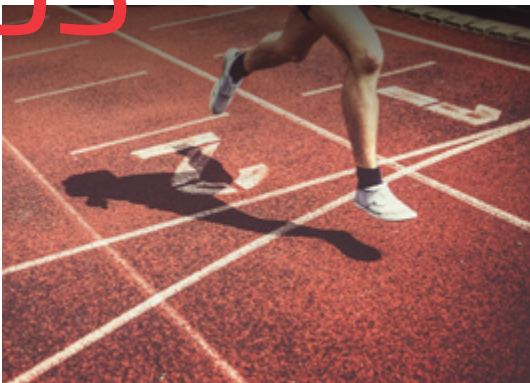
# /02



## Uniquely flexible flue gas connection

This gas boiler offers two options for flue gas connections, enabling unrivalled flexibility for installation on site. Whether you choose to mount it on the wall to save space or use your existing flue gas connection, no additional accessories whatsoever are required to switch from the top to the rear connection point or vice versa.

# /03

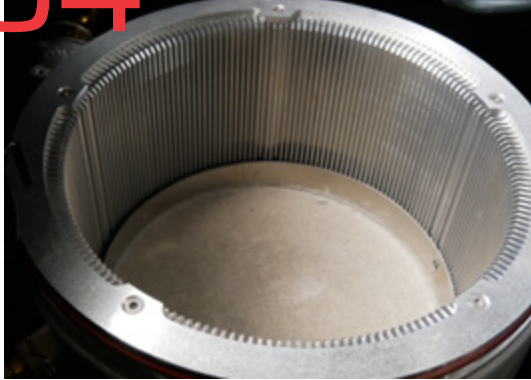


## Top marks for efficiency and extreme modulation

The targeted use of the condensing effect is demonstrated in the TGB-2 by the extremely low flue gas temperatures in all modes. The seasonal central heating efficiency is 94%\*. The boiler can modulate down to 17% of its rated output to minimise cycling. The WOLF pump spread control also gives the appliance another efficiency boost.

\*92% is required to receive subsidies as a hybrid solution

/04



### **Built to last – WOLF's heavy duty boiler**

Components like the high-capacity aluminium-silicon heat exchanger and the heat-resistant vermiculite refractory brick have demonstrated their staying power and robust design for years. The pneumatic ratio controller further enhances reliability with an optimal gas/air ratio.

/05



### **Innovative parts management – systematic sharing of parts**

Professionals will be thrilled that the TGB-2 makes use of the popular and well engineered WOLF oil boiler design: Many familiar parts are reused, and no new accessories are required. All the requirements are cleverly met by existing WOLF units (e.g. CGB-2, TOB). This simplifies replacement parts management and reduces unnecessary storage costs.

/06



### **Working perfectly – without a sound**

The TGB-2 is the quietest unit the market at < 42 dB(A). Even when the heat exchanger is operating at the upper end of its 20, 30 or 40 kW range, it remains almost silent. The appealing WOLF design brings it all together so nicely that there is no need to hide it away in a typical utility room.

# /07



## Commissioning and maintenance made easy

The commissioning assistant in the BM-2 programming unit identifies WOLF components and guides the user directly and successfully through the configuration. The popular Flip&Clean mechanism with convenient storage position, practical bayonet catches, full accessibility from the front and convenient height make the TGB-2 truly stand out when it comes to ease of maintenance.

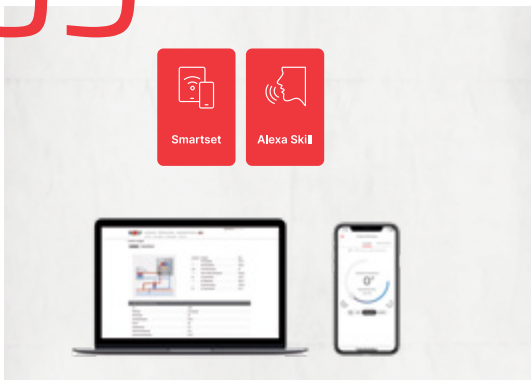
# /08



## Expandable to a complete building services centre

The 20 and 30 kW output versions of the TGB-2 can be extended with an ideally-adapted TS-160 stratification storage tank or a TR-160 spiral tube storage tank for even greater efficiency. It can also be optimally combined with the WOLF CWL-T-300 Excellent mechanical ventilation unit in even the most confined spaces. Together, it can all be installed in less than 1 m<sup>2</sup>. Direct mounting on the wall is even an option.

# /09



## Practical control and simple networking

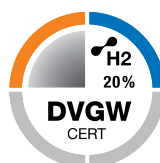
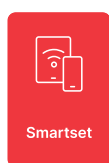
The WRS-2 control system with the BM-2 programming unit allow the heating system to be combined with the most recent and future generations of WOLF products (award-winning Hybrid+ technology). Remote diagnosis and optimization are also no problem thanks to the Smartset portal and app with integrated WOLF Link home.



# Performance specifications at a glance

TYPE		TGB-2-20	TGB-2-30	TGB-2-40
Rated heating output at 80/60°C	kW	2.9 - 17.0	5.0 - 26.9	6.1 - 35.7
Rated heating output at 50/30°C	kW	3.3 - 19.6	5.8 - 30.2	7.4 - 40.5
Seasonal central heating efficiency	%	94		
Heating energy efficiency class	-	A		
W x H x D	mm	566 × 1290 × 605		
Weight	kg	89		
Indoor sound power level LWA	dB(A)	42		
Water capacity of the heating water heat exchanger	l	7.5		
Gas connection	R	1/2"		
Connection of flow and return	G	1 1/2"		
Balanced flue connection	mm	80/125		
Minimum side clearances top/left/right	mm	0/0/0*		
Partial load flue gas temperature at 50/30°C	°C	37	45	50

COMBINED WITH A CYLINDER		TGB-2-20		TGB-2-30	
Cylinder	-	TS-160	TR-160	TS-160	TR-160
W x H x D	mm	1132 × 1290 × 605			
Boiler/cylinder weight	kg	89/76			
Cylinder nominal capacity	l	160	152	160	152
Continuous cylinder output	l/h	490	432	740	648
NL60 output factor	--	4.5	2.0	5.0	2.2



\*When using the Flip&Clean position: right 150 mm

We provide no guarantee as to the correctness of the information supplied. All specifications subject to change.





Click here to go  
directly to the gas  
hybrid system!

# WOLF hybrid family

## Hybrid+ (Heat pumps + gas condensing technology)



In detached houses or to cover multiple residential units: HYBRID+ allows you to optimally combine the advantages of two heating technologies.

- High performance and efficiency thanks to proven gas condensing technology
- Hygienic DHW heating
- Highly innovative heating using renewable energy based on heat pump technology

The quality of the building shell and the quality of the technical systems are directly related. A hybrid system allows you to achieve a higher building standard.



### Benefits at a glance

- Heat pump covers the year-round base heating load with environmental energy
- Annual savings of up to 30% in CO<sub>2</sub> emissions and 35% in heating costs
- Gas condensing heat generator covers peak loads
- Save real money: Select economical or environmental operation with the intelligent control unit
- Effective use of PV energy with heat pump

## WOLF solar heating system



The WOLF solar heating system offers a perfectly integrated collection of solar collectors, controller, buffer cylinder, heat generator and pumps



### Benefits at a glance

- All components controlled together
- Maximum energy savings: The gas condensing boiler automatically switches off when the sun is shining.
- Additional energy savings through automatic detection of periods of good weather
- DHW heating for up to four months purely on solar energy
- Maintenance is simple and straight-forward
- Control of heating times, holiday mode and temperatures plus informative monitoring of the solar yield with the WOLF Smartset app

# Our expert advisers are more than happy to help:

## **WOLF Energiesystemen BV**

Blauwe Engel 1  
8265 VB Kampen  
Tel. +31 38 3335086  
[www.wolf.eu/nl-nl](http://www.wolf.eu/nl-nl)

## **WOLF Italia S.r.l.**

Via XXV Aprile, 17  
20097 S. Donato Milanese  
Tel. +39 02 5161641  
[www.wolf.eu/it-it](http://www.wolf.eu/it-it)

## **WOLF France S.A.S.**

ZI La Prairie  
10 rue de la Prairie  
91140 Villebon-sur-Yvette  
Tel. +33 1 60136470  
[www.wolf.eu/fr-fr](http://www.wolf.eu/fr-fr)

## **WOLF HVAC Systems (Shanghai) Co., Ltd.**

Unit 203, Building B, No. 388  
North Fuquan Road  
200335 Shanghai  
Tel. +86 21 6125 6246  
[www.wolfhvac.com](http://www.wolfhvac.com)

## **WOLF Iberica S.A.**

Avenida de la Astronomia 2  
28830 San Fernando de  
Henares  
Tel. +34 91 6611853  
[www.wolf.eu/es-es](http://www.wolf.eu/es-es)

## **WOLF Technika Grzewcza Sp. z o.o.**

Ul. Sokolowska 36  
05-806 Komorow Warszawa  
Tel. +48 22 7206901  
[www.wolf.eu/pl-pl](http://www.wolf.eu/pl-pl)

**If you have any questions about this brochure,  
please contact us at [feedback@wolf.eu](mailto:feedback@wolf.eu)**



**We look forward to  
hearing from you.**

Subject to technical modifications. Please note that only the WOLF product is shown in the images of the product. You will usually need incoming and outgoing lines which are connected to the WOLF product from the outside.

WOLF GmbH  
Postfach 13 80  
D-84048 Mainburg  
Tel. +49 (0)8751 74-0  
E-Mail [info@wolf.eu](mailto:info@wolf.eu)  
[www.wolf.eu](http://www.wolf.eu)

# **WOLF**

**Perfectly in tune with you.**

DE/01.23 part.no. 4801808